

1 Summary

This document details how to upgrade the firmware of a Unidrive M200-M400. This includes upgrading control and power firmware via Unidrive M Connect.

2 Drive firmware

2.1 Upgrading from V01.02.00.04 to a more recent version

From V01.02.00.04 firmware onwards, there is a built in bootloader to allow firmware to be upgraded.

This is accomplished using Unidrive M Connect V1.5.2 or later. If an older version of Unidrive M Connect is present, please download the latest version from the main Control Techniques website or the Connect page on Support Suite.

Please note that upgrading the drive firmware with Unidrive M Connect will not erase any onboard program on the Unidrive M200 to M400 drive.

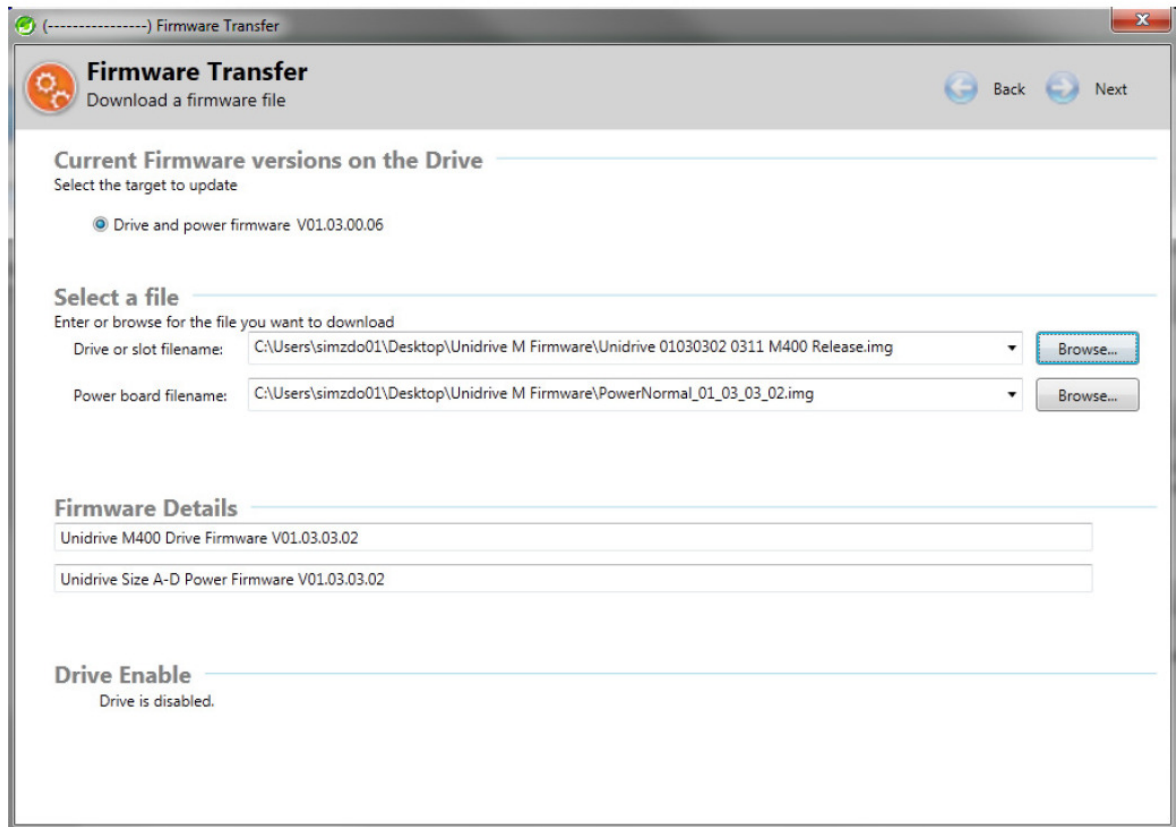
The Power Normal firmware is used with size 1 to 4.

The Power Large firmware is used with size 5 to 9.

2.1.1 Using Unidrive M Connect

As Unidrive M Connect will automatically detect available drives, minimal communication settings are required from the user.

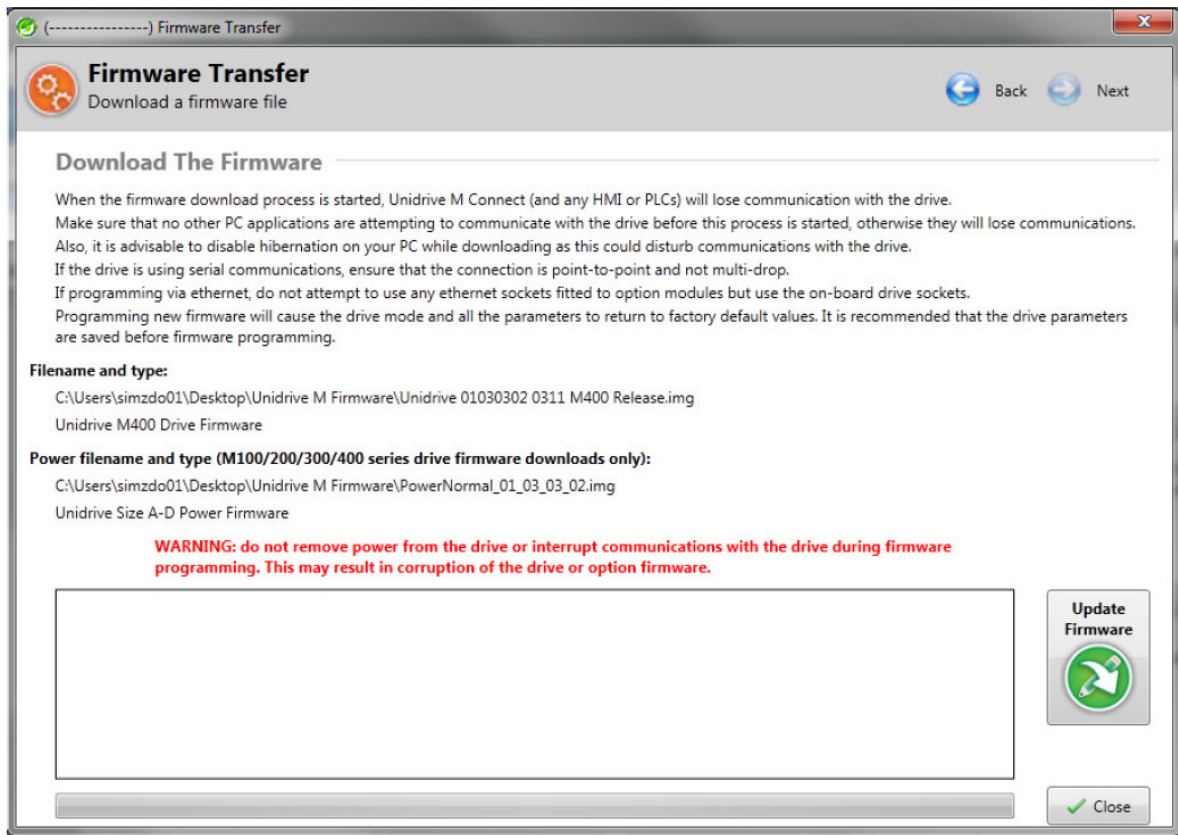
Once connected to the required drive, please click on the “Change Firmware” button. This will open up a new dialog box as shown below:



Under the “Select a file” section, please select the firmware files that are required (drive and power). All firmware files will have a file extension of “.img” E.g. Unidrive 01030302 0311 M400 release.img.

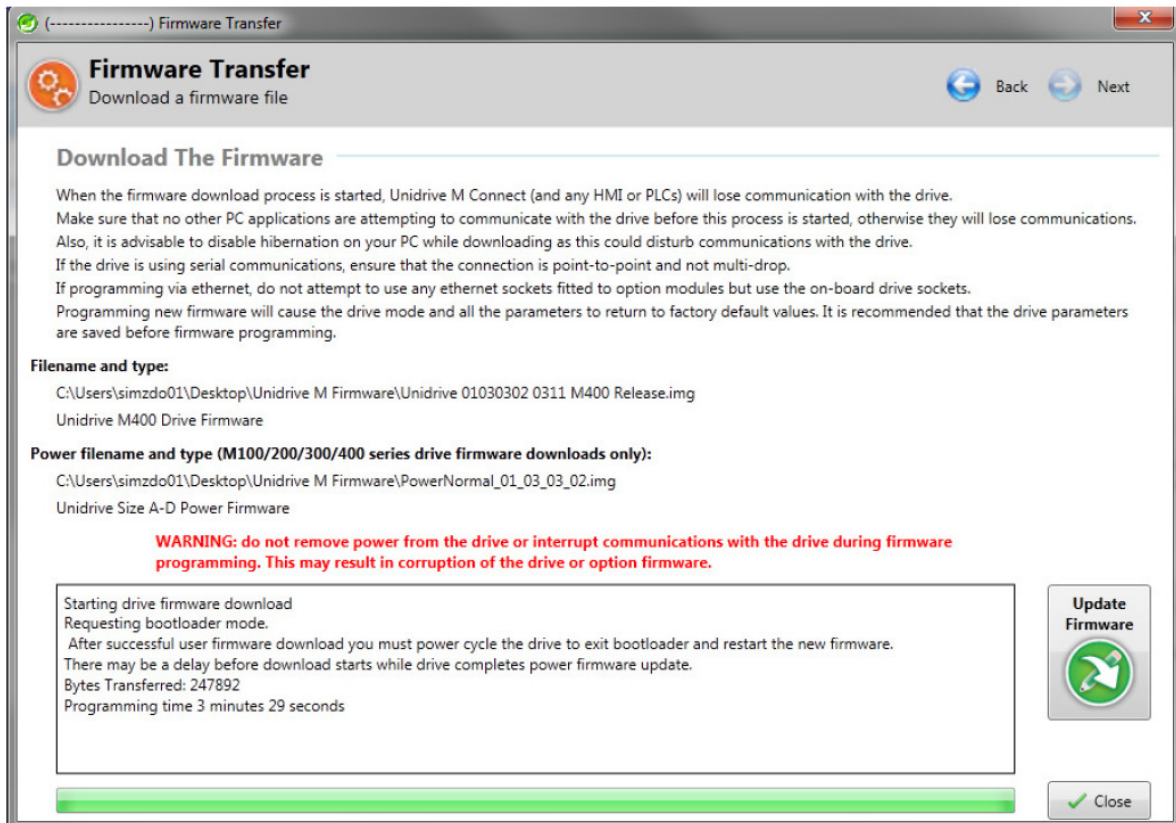
Once the appropriate firmware files are selected, Unidrive M Connect will detect the type of file e.g. drive control board firmware. Please note that the drive must be disabled to continue with the firmware upgrade.

Then click on the Next button on the top right corner and this will bring up the box shown below:



To begin the firmware upgrade, please click on the “Update Firmware” button on the right hand side. This will then automatically download the new firmware to the appropriate target and reset it.

Once complete, the window will display that it is complete by showing the programming time as shown below. The drive will also show “End.I” or “End Image”:



If trip EEF / EEPROM Fail occurs after the upgrade, the drive has to be defaulted and saved. After the target is defaulted, the target should then be ready to resume operation.