 All for dreams	COMMUNICATION TECHNIQUE / TECHNICAL COMMUNICATION
	Setting procedure to use Connect software with Commander ID300

N°: LS170702_en	Rev. : 1	Date : 25/07/2017	Emetteur/ Issued by : AA
Produit / Product : Commander ID300/302 with Connect software			

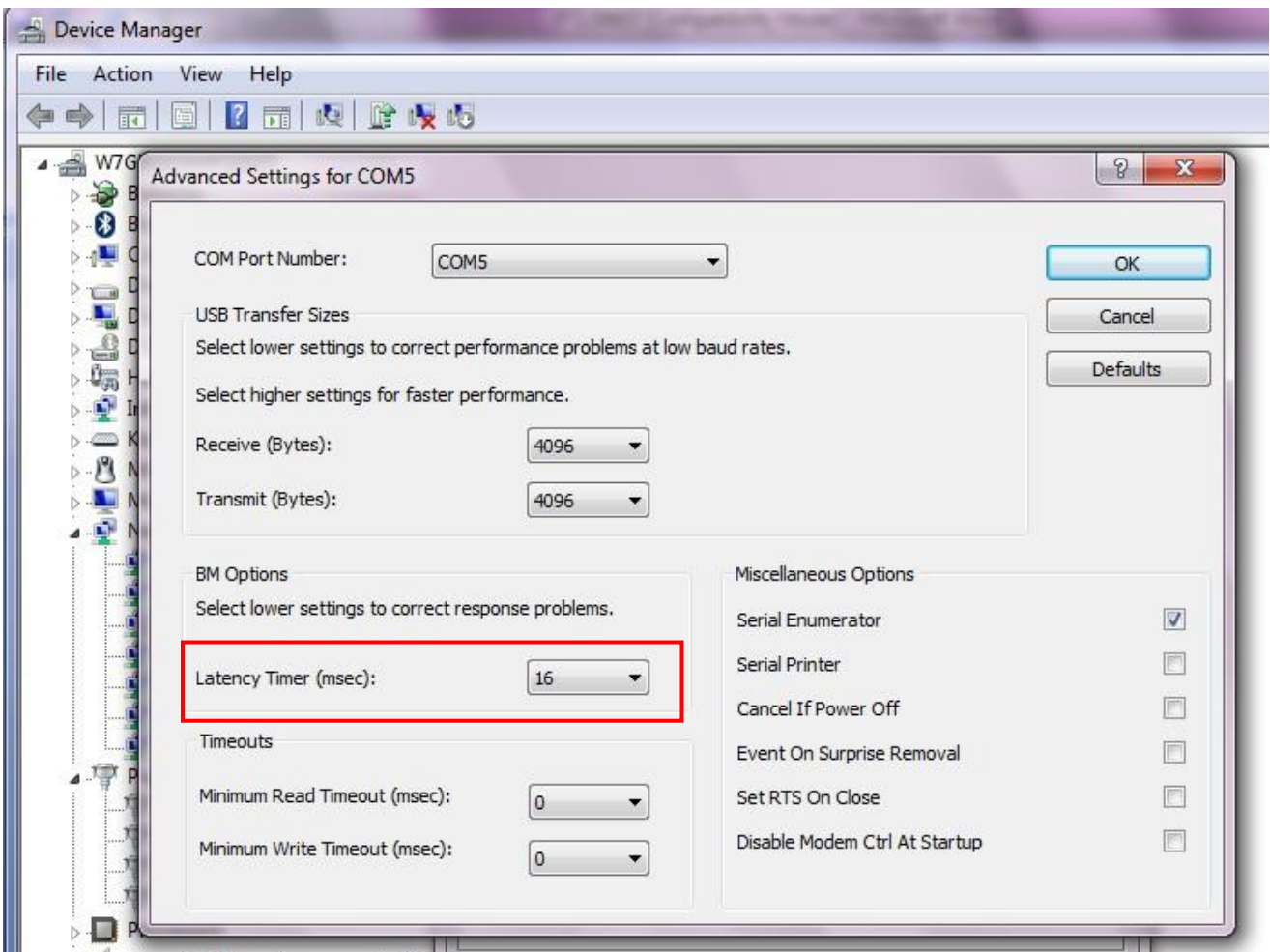
Summary

The Commander ID300 operates at 115200 bauds as standard, however at this speed it is necessary to follow a procedure to correctly set the PC to allow the communication with “Connect” software.

Caution: This new setting can affect other Comms software, it is then advisable to inform your IT department before making any change.

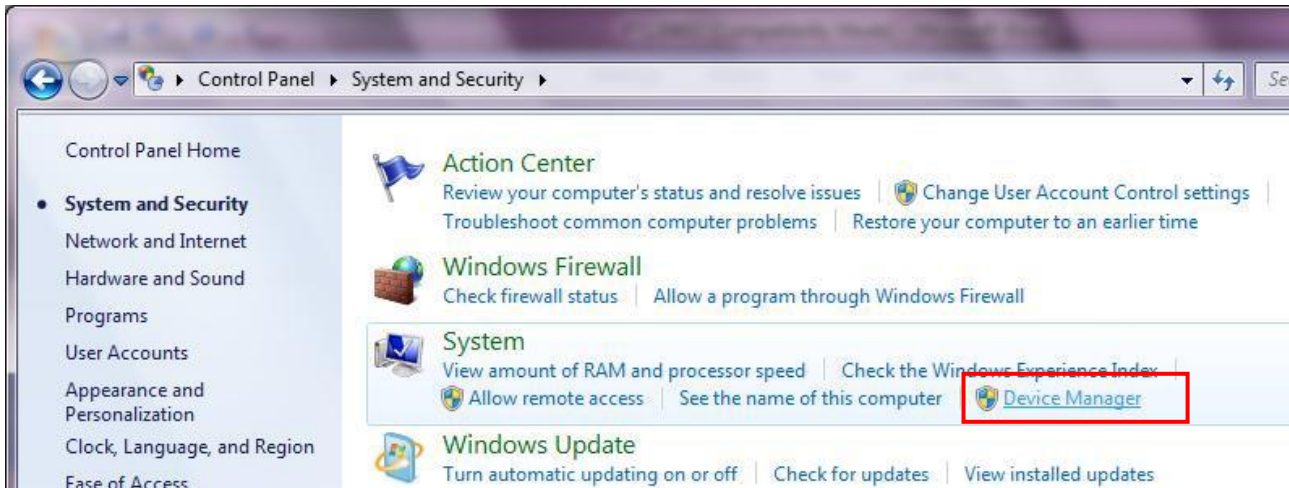
Procedure

For the PC to be able to communicate with the drive, you need to change the latency time of the PC, set to 16 ms by default. The value has to be changed to 1ms. Screenshots come from Windows 64 bits.

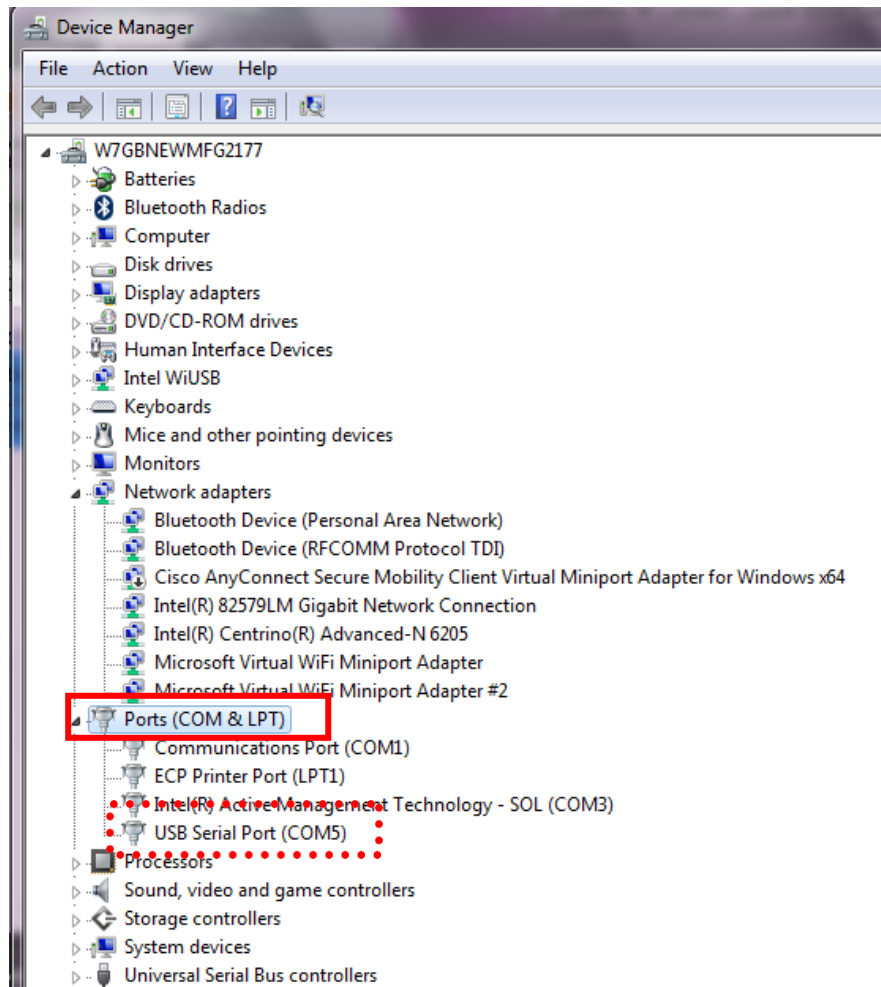


Setting procedure to use Connect software with Commander ID300

1. Ensure the lead is connected between the PC and the drive (USB/RS485 cable, ref.4500-0096)
2. On the PC, go to « Control Panel > System and security > Device manager »

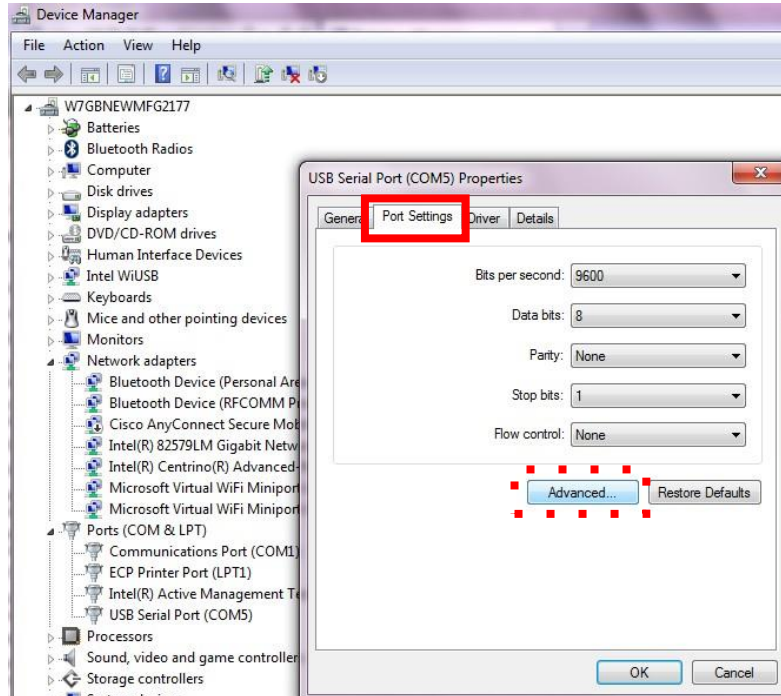


3. Select Ports then select the relevant comms port (this will differ from machine to machine) to which your comms lead is connected and double click.

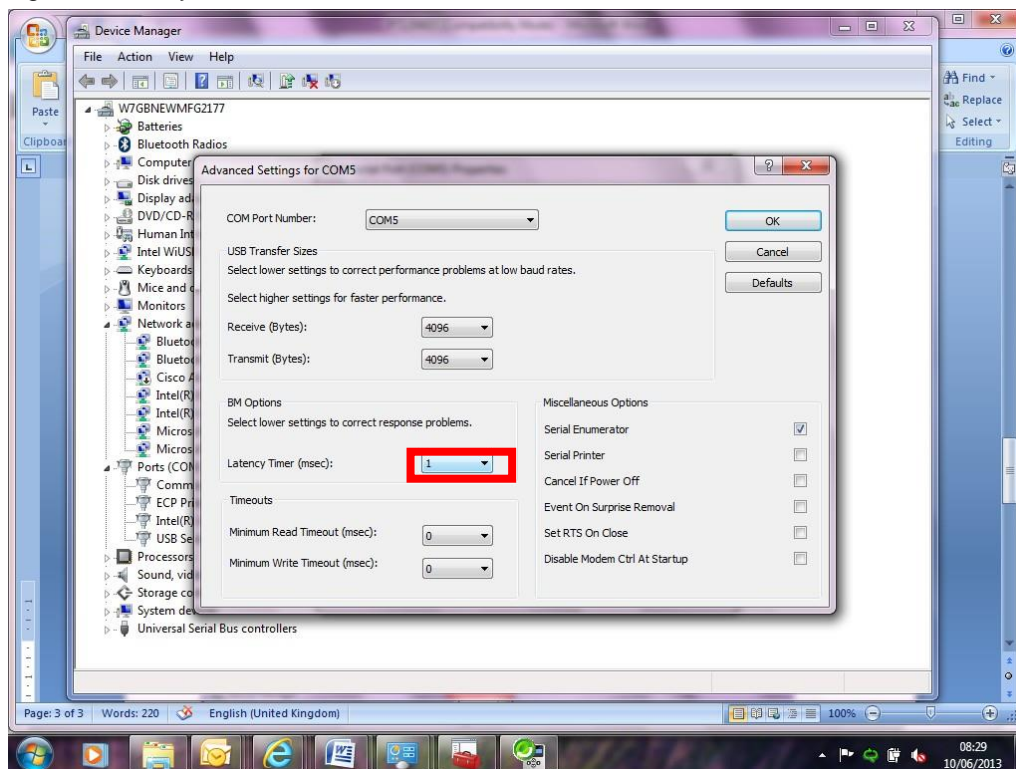


Setting procedure to use Connect software with Commander ID300

4. Select the Port Settings tab then Advanced.



5. Change the latency timer to 1msec and click OK



Nota : If you decide to connect the lead to another port of your PC, you will need to follow the procedure again.